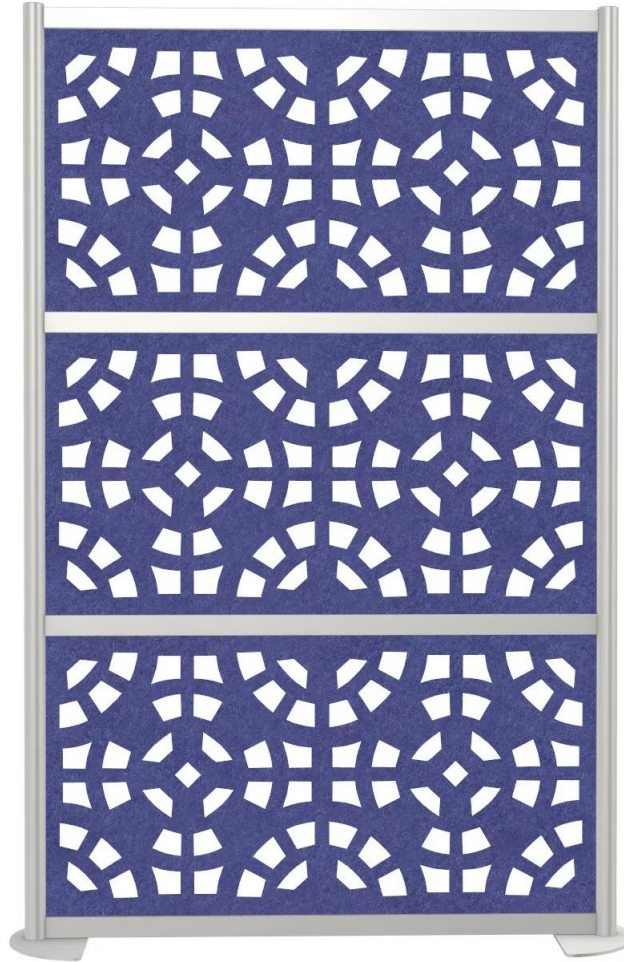




Skutchi Designs, Inc.

(888) 993-3757  
sales@skutchi.com

## CHISEL ACOUSTIC ROOM DIVIDER | ACOUSTICAL PRIVACY PARTITION



**\$1,407.38**

Offices are getting louder, and space division products that can absorb sound and look incredible are hard to come by. Chisel is an eco-friendly laser cut PET collection. Made from 75% recycled water bottles and precision cut in a factory in Dallas, these panels can slide into Framewalls, make



a statement on your wall, or even hang from the ceiling.

Available in a variety of configurations, sizes, colors and patterns, the Chisel collection is designed to fit every need.

- **Price Shown** is for (1) 52"W x 78"H divider, with white frame and (2) half moon bases.  
Design shown: Aztec

### Design Features

- 24 acoustic finishes
- 12 standard panel designs
- Multiple applications: Chisel ceiling baffle, chisel on the wall, and chisel in a frame
- Custom colors and designs available upon request

### Environmental Features

- Frame is made from 75% recycled content
- Frame and panels can be recycled

### Specs

- Frame is available in black, white and silver
- Caster or half moon bases available
- Link is available to connect multiple walls together
- Contact us for your custom design
- **Lead Time:** 2 - 3 weeks

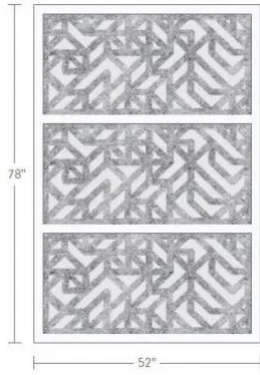
**SKU:** CHISEL

## GALLERY IMAGES



Skutchi Designs, Inc.

(888) 993-3757  
sales@skutchi.com



24 ACOUSTIC FINISHES



12 STANDARD DESIGNS

