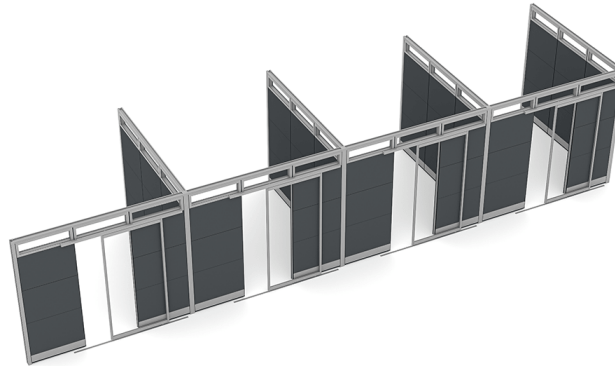




**DIVIDER WALL VALUE PACK | SAPPHIRE WALL SYSTEM | 9'X9'X95"H**



**\$38,877.28**

- **Actual Footprint Size:** 9'6"D x 36'9"W x 95"H
- **Individual Workspace Size:** 9'D x 9'W x 95"H
- **Panels Pictured:**
  - **Fabric:** Charcoal
  - **Laminate:** None
  - **Glass:** Tempered Glass
- **Worksurface Pictured:** None
- **Trim Pictured:** Silver
- **Storage Shown:** None
- **Door Pictured:** Clear Sliding Door



Skutchi Designs, Inc.

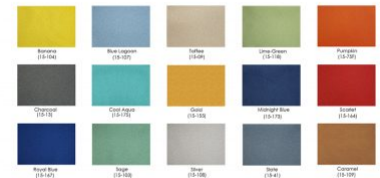
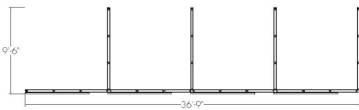
(888) 993-3757  
sales@skutchi.com

This system is completely customizable - View the fabric options to the left

Contact our designers to create your dream office 1-888-993-3757 or e-mail [sales@skutchi.com](mailto:sales@skutchi.com)

SKU: SAPW-TYP14-1

### GALLERY IMAGES



### PRODUCT DESCRIPTION

#### Why Buy Our Divider Wall Value Pack?

The **Sapphire Wall System** offers this divider wall value pack which can be built to a variety of shapes, sizes, and panel colors. This highly versatile panel system--with heights ranging over 7', 8' or 9'ft--is completely freestanding with no permanent attachments to your floor or ceiling.

In other words, our divider wall value pack are fully demountable. It usually takes less than a day to



assemble (depending on the size of the project).

You can also customize the panels of our office dividers with doors in a variety of ways; choose all glass or mix in laminates and fabric panels. We offer multiple color fabric and laminate options. The **Sapphire Wall System** is a beautiful, modular wall alternative to traditional drywall construction--which can take weeks of construction and downtime.

### **What Comes With This Product?**

The **Sapphire Wall System** pictured here is a four-person divider wall value pack configuration paneled in white laminate and featuring tempered glass "caps" on the top. This arrangement of the **Sapphire Wall System** creates individual spaces 9' wide, 9' in depth, and 8' in height. Also, each cubicle features a sliding acrylic door. In addition, you can upgrade to a traditional swing door with a lock if you prefer. In fact, you can make all kinds of alterations to our wall system. We have several fabric colors and laminates from which to choose.

### **What Else?**

The divider wall value pack of our **Sapphire Wall System** are fully compatible with any items available in our [Sapphire Cubicle System](#), which includes workstations, furniture, and accessories such as file storage, shelving, overhead storage, desks, chairs, and padded benches, paper racks, and accessory rails. Give us a call to customize yours today!